

One *Learning* Community



Territorial Acknowledgement



Connecting



1. Stand around your table.
2. Think of a child who has challenged you.
3. Now consider what you were given the opportunity to learn? What is/did the child teach(ing) you?
4. Introduce yourself, your school, share the first name of the child, and the learning/gift they taught you.

Welcome

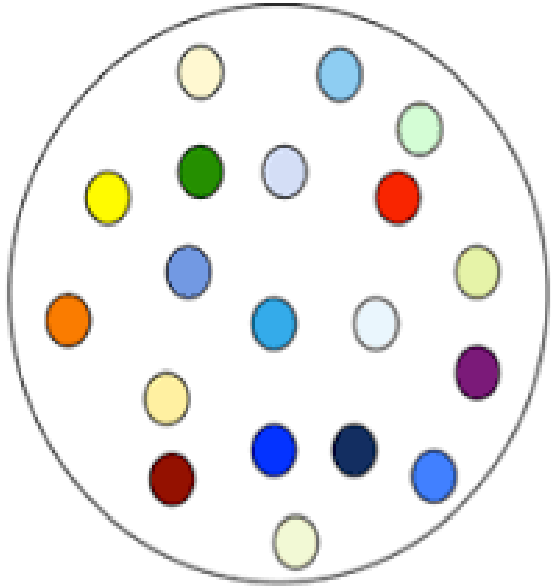
SD61 WiFi Guest login -

Username: guest61

Password: sunshine

Shape of the Day

8:45	Coffee
9:00	Connecting
9:20	Moving Inclusion Forward
10:00	Coffee
10:15- 11:30	Knowing our students School-Based Team
11:30- 12:30	Lunch
12:30- 1:30	Connecting the Dots
1:30- 2:30	Business - folder overview
2:30 - 2:45	Wrap Up



**Inclusion is about seeing
diversity as a strength**

**Inclusion is about GREAT
teaching and learning**

**Inclusion is about empowering
everyone to support ALL students**

Compost Kate Saves the Earth!



Shelley Moore

Moving Inclusion Forward ~ 2019/2020

It's all about...

Infrastructure



What is the infrastructure that supports inclusion?

1. Guiding Conditions

2. Supportive and Collaborative Pro D

3. Planning and Design Frameworks

Guiding Conditions

Presuming competence...



Guiding Conditions

In classes where appropriate ...



Guiding Conditions

Meaningfully engaged with peers...



Guiding Conditions

Purposeful roles and responsibilities...



Supportive & Collaborative Pro D that ...

... is situated, ongoing, inquiry based.

**... supports collaboration and the
changing roles of educators.**

Planning & Design Frameworks

Programming Through UDL

IEP and Support Plans

Collaboration With Teachers

School-Based Team

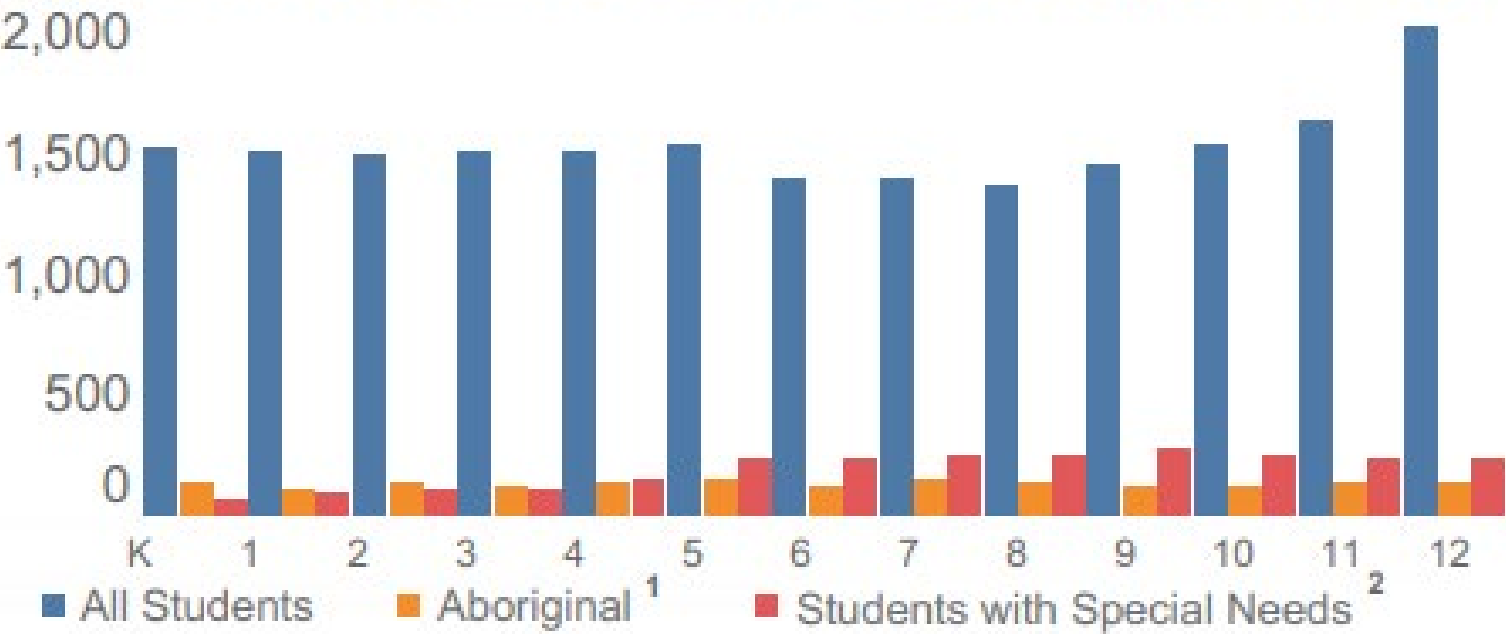
Current Headcount

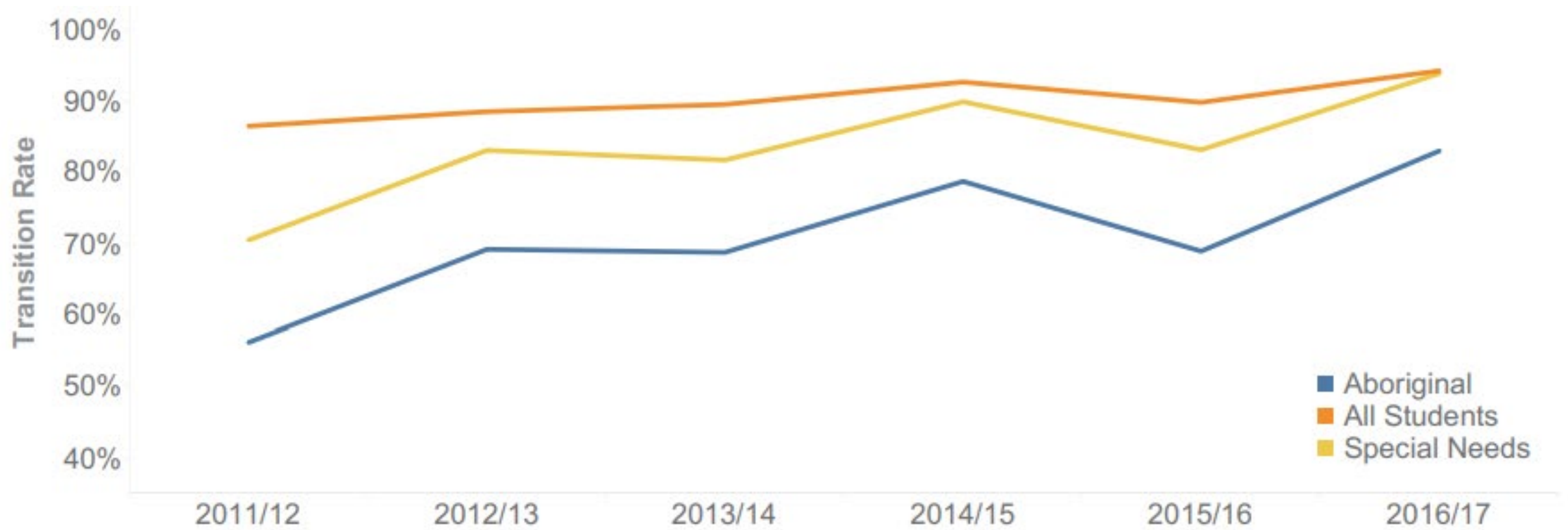
20,366

Projected change
over next 10 years

2,284 

Total Students Across All Grades (2018/19)





Grade-to-Grade Transitions (2016/17)

Grade 8 Students in 2006/07 (adjusted for migration in and out of B.C.)

2,021

100% of Student Group

K-12 Non-Graduates

552

27% of Original Student Group

K-12 Graduates

1,469

72% of Original Student Group

No Progress to B.C.
Public Post-Secondary
After K-12 by Fall 2017

529

95% of non-graduates
26% of original student group

Progress to B.C.
Public Post-Secondary
After K-12 by Fall 2017

23

4% of non-graduates
1% of original student group

No Progress to B.C.
Public Post-Secondary
After K-12 by Fall 2017

568

38% of graduates
28% of original student

Progress to B.C.
Public Post-Secondary
After K-12 by Fall 2017

901

61% of graduates
44% of original student group

Transition to B.C. Public Post-Secondary Education 2016/17

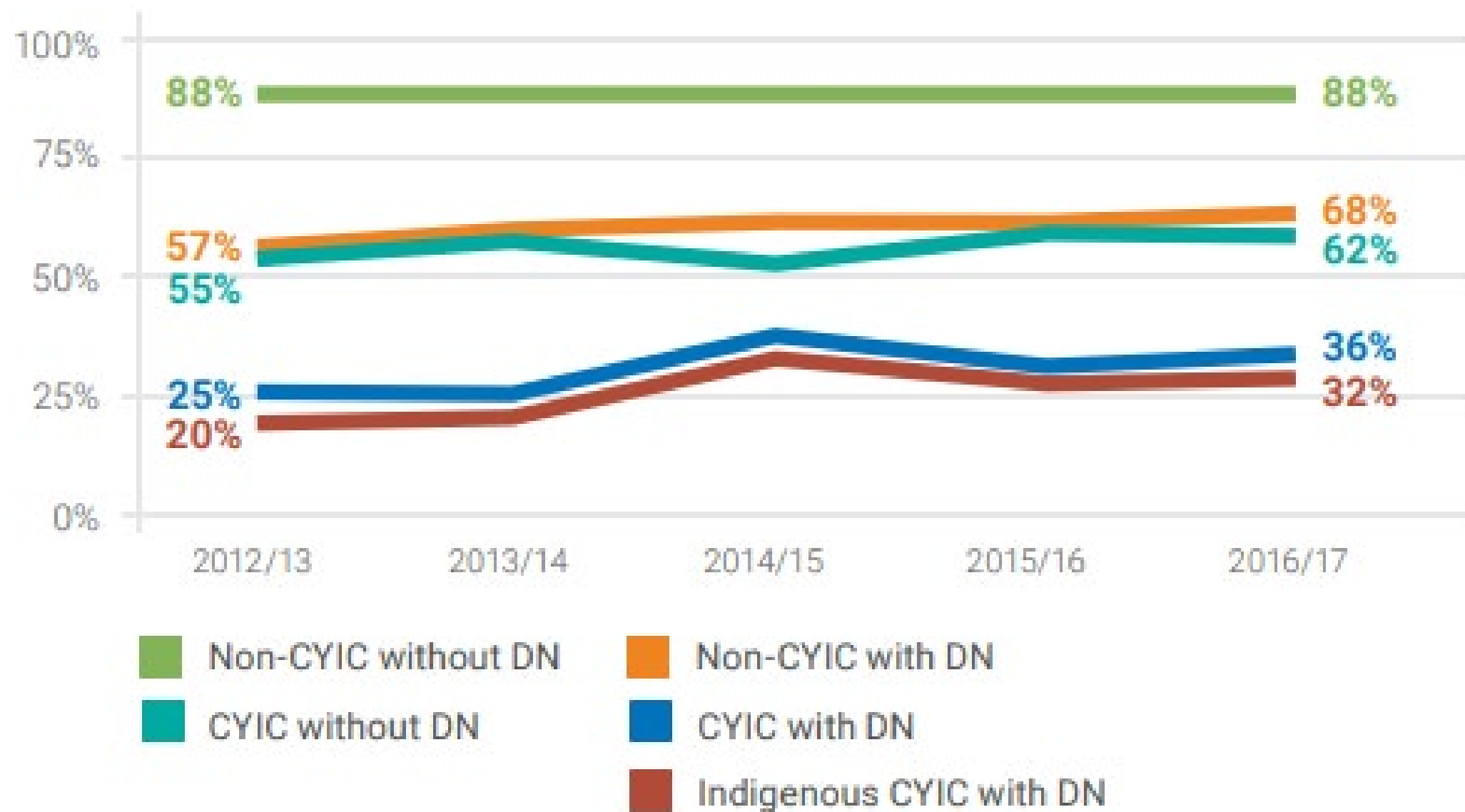
SEPTEMBER
2018



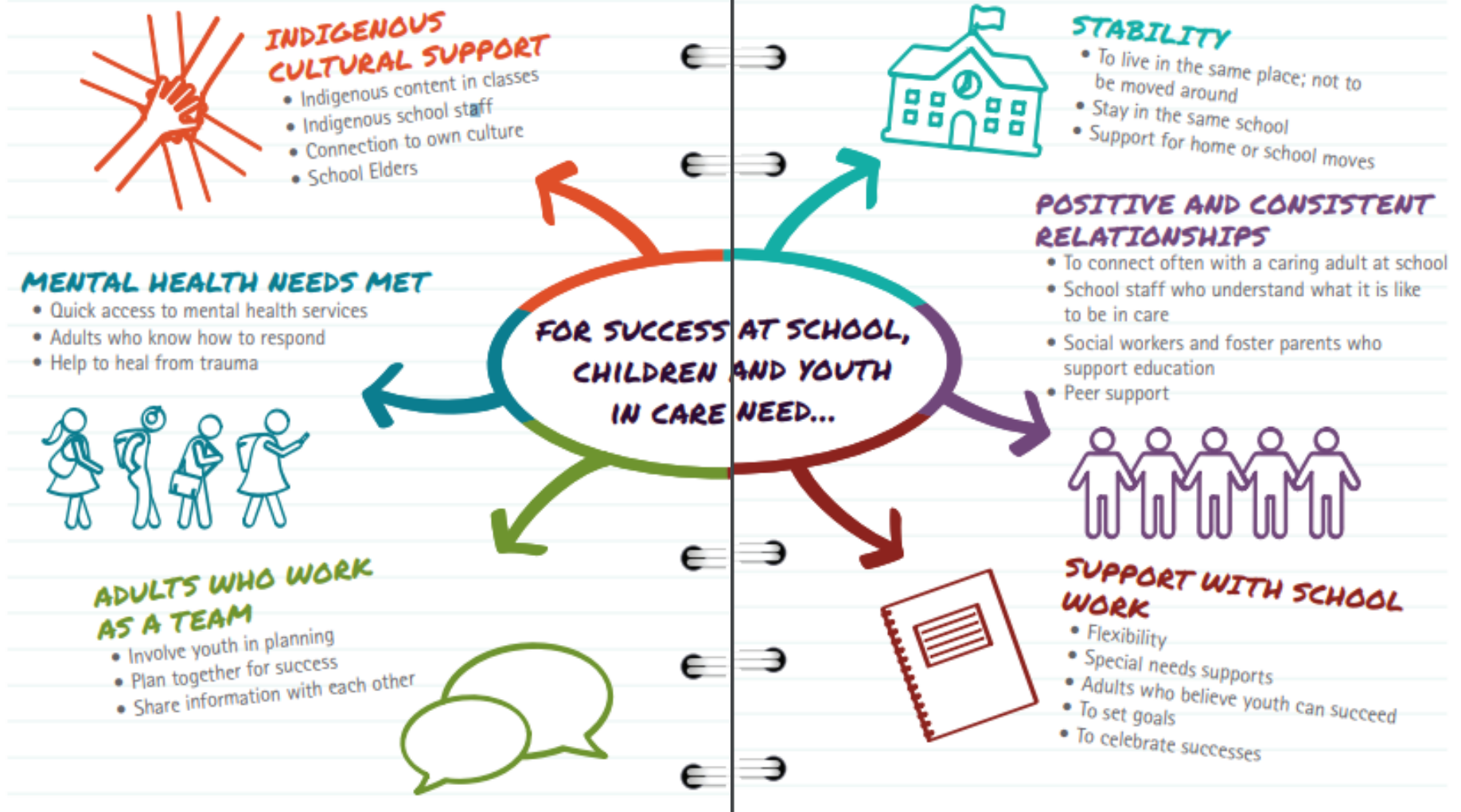
HOW ARE WE DOING?

Children *and* Youth in
Government Care *and*
Youth on Youth Agreements

FIGURE 8. SIX-YEAR COMPLETION RATES CYIC & NON-CYIC WITH & WITHOUT DIVERSE NEEDS



KEY REPORT FINDINGS: WHAT CHILDREN AND YOUTH IN CARE NEED FOR SUCCESS AT SCHOOL



Pause and Ponder

Indigenous Education GVSD

The courage to make change requires a proactive plan in which everyone has a role.

Butch Dick



Indigenous Education GVSD

Our Story

Indigenous Student Demographics GVSD

Aboriginal Student Demographics (February 2019)

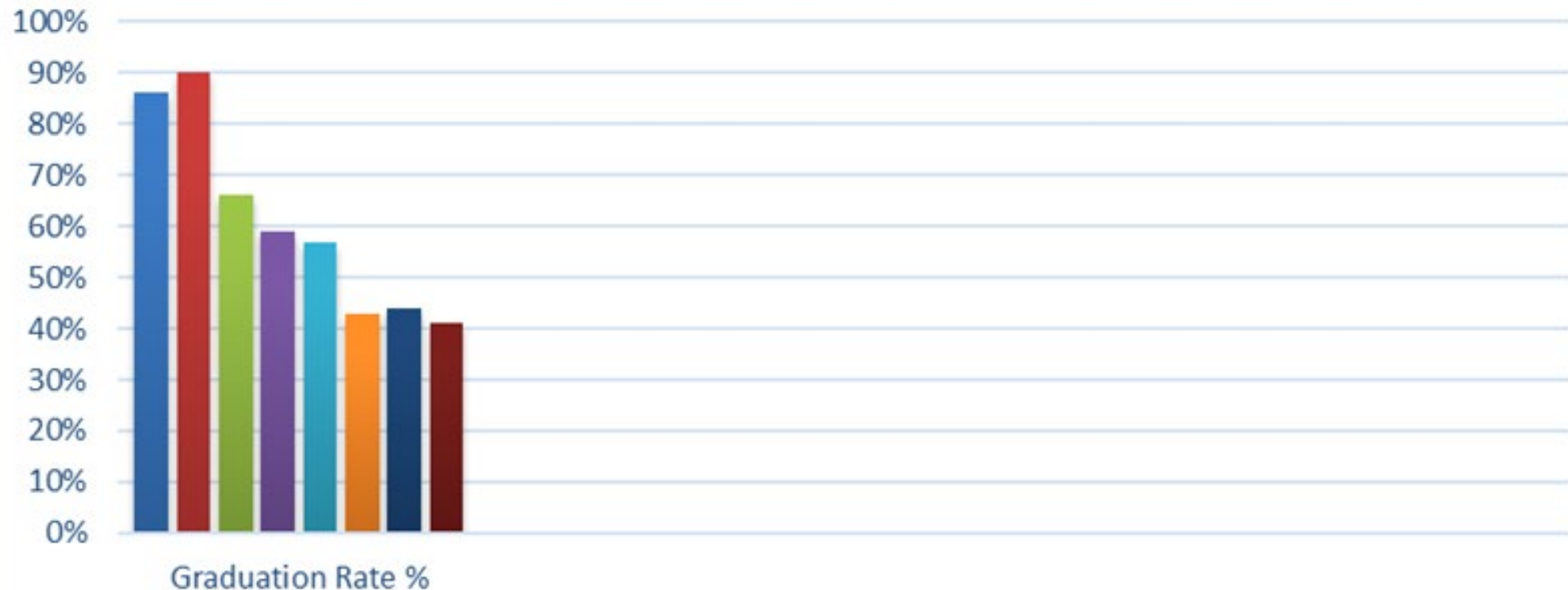
Metis	333
First Nations	1232
Inuit	16
TOTAL	1581

Aboriginal Student Population By School (February 2019)

Elementary	744
Middle	355
Secondary	482
TOTAL	1581

Indigenous Education GVSD

Graduation Rates 2017-18



■ Provincial Non-Aboriginal (86%) ■ SD61 Non-Aboriginal (90%) ■ Provincial Aboriginal (66%)
■ SD61 Aboriginal (59%) ■ Provincial On-Reserve (57%) ■ SD61 On-Reserve (43%)
■ Songhees Nation (44%) ■ Esquimalt Nation (41%)

Indigenous Education GVSD

Attendance

Factors that Contribute to High Attendance:

School Factors

- ▶ Strong and caring relationships between students and teachers
- ▶ Teacher's understanding of individual learning needs and providing necessary support
- ▶ Good communication between school and parents
- ▶ Students feeling safe and confident in their identity at school
- ▶ Friendships that help students feel like they belong

Community and Home Factors

- ▶ Active parental support for children and youth being at school
- ▶ Community engagement in promoting the value of education
- ▶ Good communication between parents and school
- ▶ Community engagement in supporting the well-being of families

Indigenous Education GVSD

Attendance

Factors that Contribute to Low Attendance

School Factors

- ✓ Weak relationships between students and teachers
- ✓ Inadequate communication and connection between school and parents
- ✓ Student perception that curriculum is irrelevant, not engaging
- ✓ Racism in schools

Community / Home Factors

- ✓ Community or home environment that does not support education
- ✓ Mental health issues for parents or children
- ✓ Negative parental experiences or attitudes about education

75% of children who are chronically absent by the time they reach Grade 6 will not complete high school. (Chronic Absenteeism Report, Child and Youth Advocate 2019)

Indigenous Education GVSD

Attendance

Improving Student Attendance Together

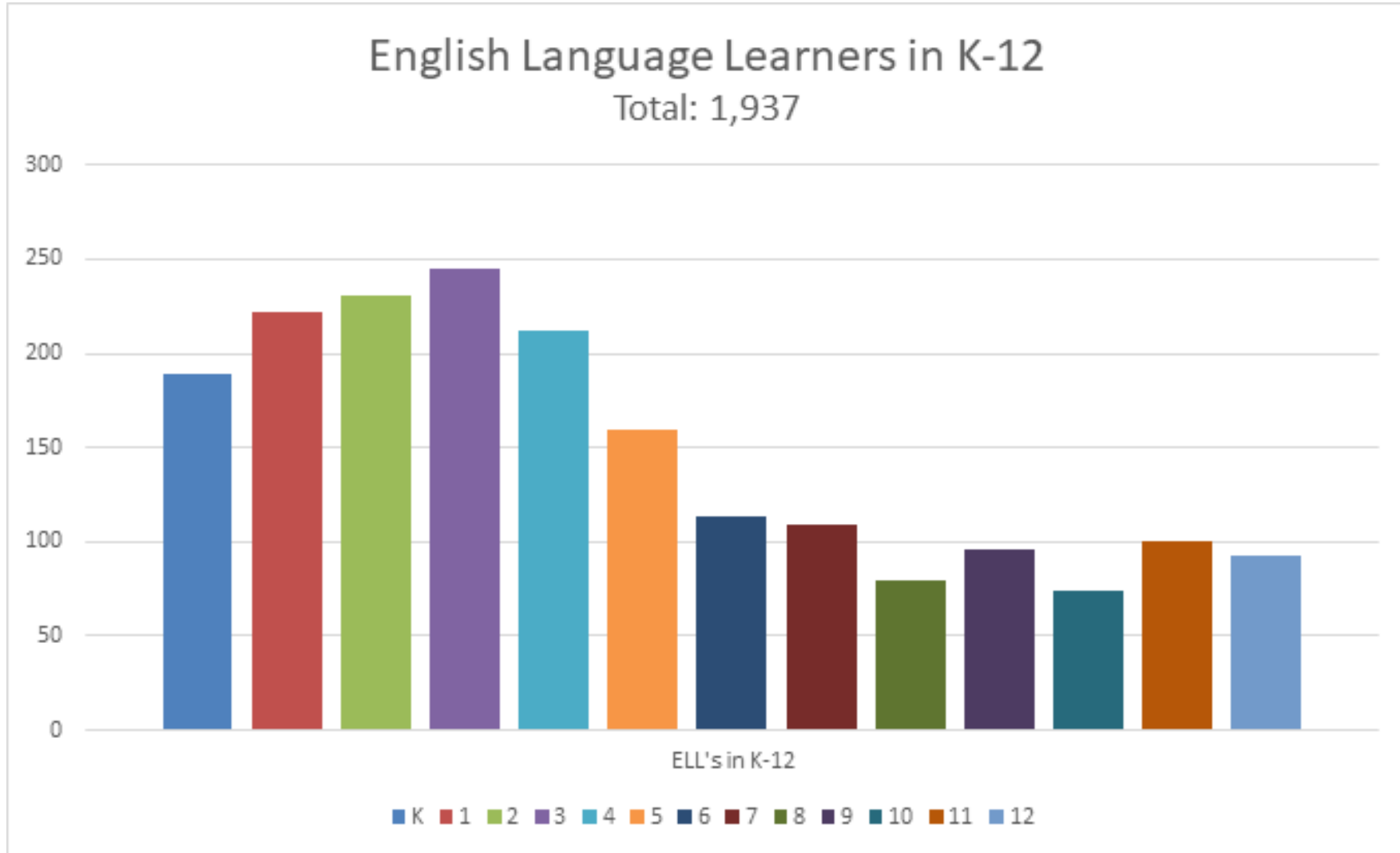
- ▶ Effective approaches will include school wide prevention strategies, early intervention, effective absence monitoring, family involvement and collaboration
- ▶ Effective programs will address the individual needs of children as well as issues in families, schools and communities

Indigenous Education GVSD

Hay'sxw'qa



February 2019 ELL Data



1937 ELL Students- 128 Refugees

Getting to Know Our Students



Diversity in our classrooms and schools

Who are the learners in your school?



These students are unique people with unique strengths and unique stretches who need personally targeted supports.

CREATING INCLUSIVE PLANS

@kwiens62



★ DREAM BIG

- IMAGINE POSITIVE & POSSIBLE FUTURES
- CREATIVELY REMOVE BARRIERS

★ PRESUME COMPETENCE

- EVERYONE CAN LEARN & GROW
- COMMUNICATE HOPE

★ START EARLY

- BEGIN TODAY
- BE PATIENT

📍 KNOW THE "WHY"

- ENSURE YOUR STUDENTS KNOW THEIR "WHY"
- FIND OPPORTUNITIES EVERYWHERE

📍 START WITH STRENGTHS

- RECOGNIZE WHAT YOUR STUDENT CAN DO
- BUILD & EXPAND ON THESE AREAS

📍 TAKE SMALL STEPS

- SCAFFOLD LEARNING
- CELEBRATE SMALL SUCCESSSES

👍 START WITH RELATIONSHIPS

- BUILD TRUST
- OFFER UNCONDITIONAL POSITIVE REGARD

👍 CREATE SYSTEMS

- DO TASK ANALYSES
- BUILD ROUTINES & SCHEDULES

👍 USE VISUALS

- TRANSFER FROM SCHOOL TO COMMUNITY
- TRANSFER FROM PERSON TO PERSON

Pause and Ponder ...

In your role, how do you support colleagues to plan for diversity?



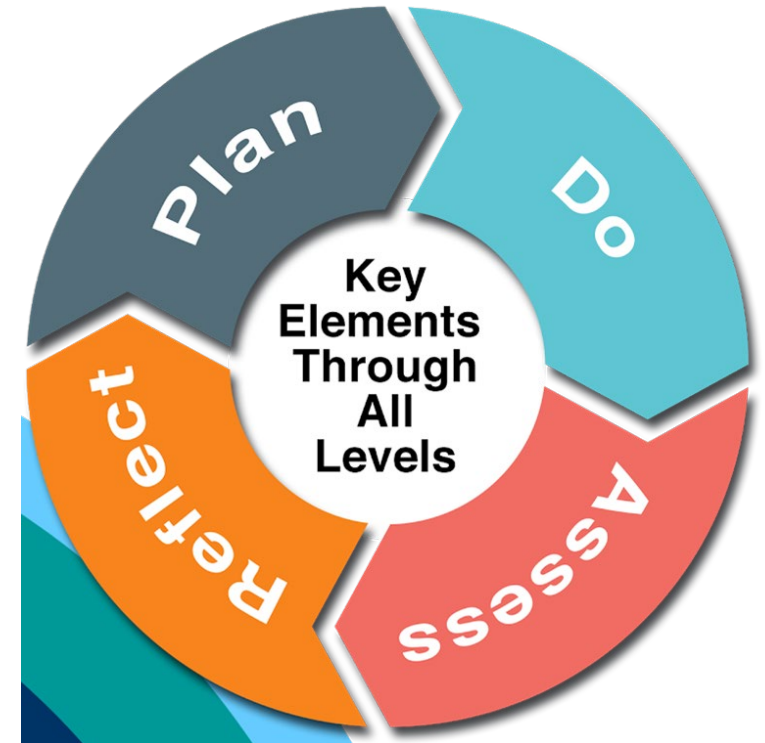
School Based Team

A School Based Team (SBT) is a group of professionals who work as a collaborative problem-solving unit to coordinate support for students.



School Based Team - Key Attributes

- Clear roles and responsibilities
- Shared understanding of purpose
- Clear operational procedures
- Resources available
- Ongoing evaluation



SBT Activity

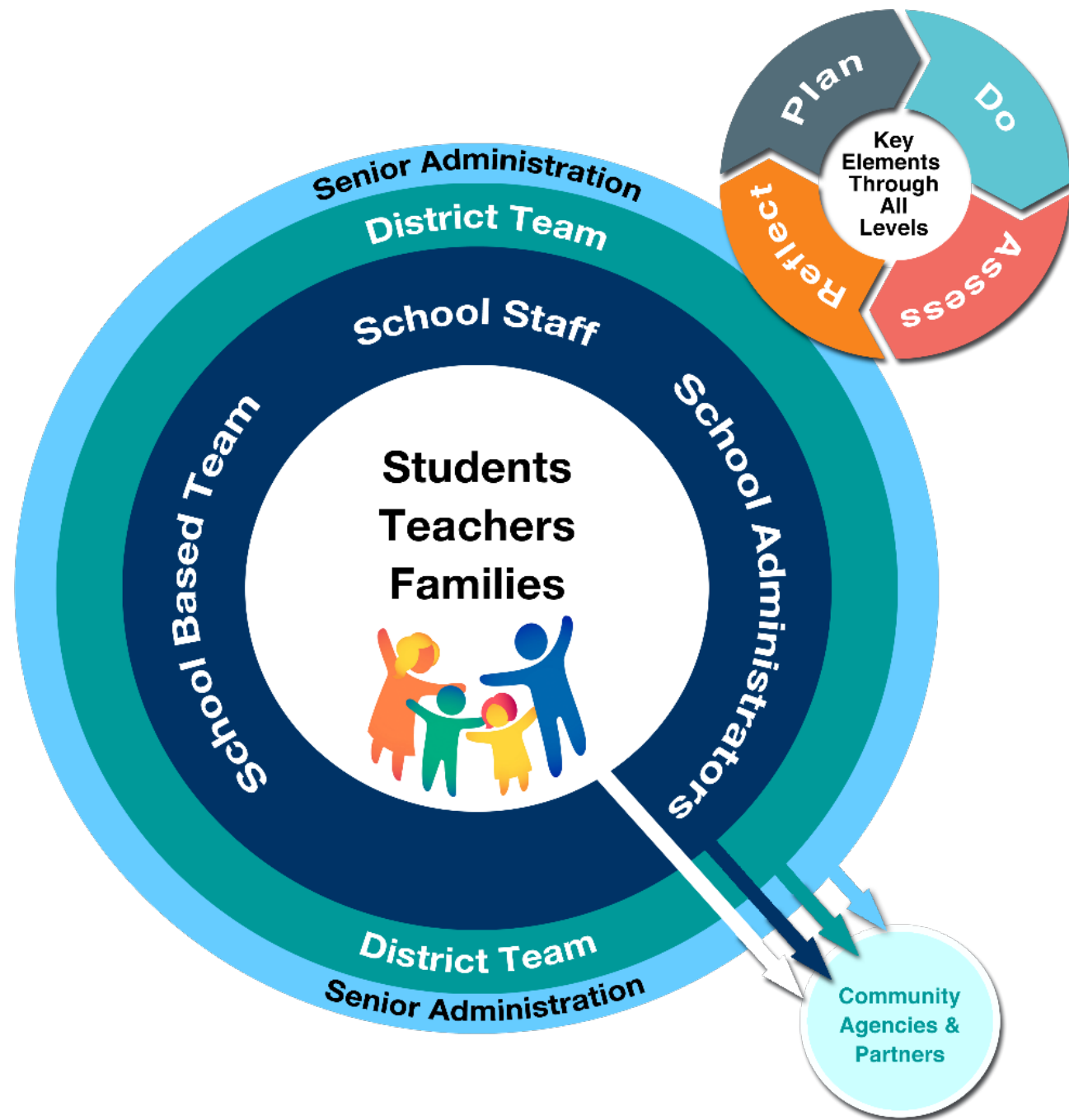
1. Read the NVSD SBT Excerpt
2. Reflect with folks at your table:



Consider: similarities, differences, new ideas

3. We will come back together for an opportunity to share in the larger group.









Ministry Designations



September 2019 - 1701 To Do's

**Designation process, forms,
checklists**

MyEd updates

Creating the IEP shell

- For September only, for designated students who aren't found in Student Services and don't have an IEP in MyEd

Updating plan name and dates

- Changes the IEP status to active; changes the Inclusive Ed status from exited to active

New Site: <https://supportforlearning.sd61.bc.ca/>



SD61 Learning Support Team

CONTACT | TRANSLATE 

SEARCH



GREATER VICTORIA SCHOOL DISTRICT #61
VICTORIA, BC, CANADA

Learning
Support Team

Learning
Opportunities

Collaborative
Supports

Staff
Resources

District Links



Welcome to our new site! Can't find what you're looking for? [Contact us.](#)

Mission:

We nurture each student's learning and well-being in a safe, responsive, and inclusive learning community.

Vision:

Each student within our world-class learning community has the opportunity to fulfill their potential and pursue their aspirations.

WELCOME TO SUPPORT FOR LEARNING

Upcoming Events

[Edit Calendar](#)

New ELL Teacher Orientation

EA Bridging

When:

Sept 16th - 27th

**Shadow in
Schools:**

Sept 24th - 26th



Upcoming events

Sarah Ward - September 25 and 26 @ QA

LST orientation - October 1 @ Uplands (here)

Counsellor Collab - October 3 - details TBA

Community Service Provider Fair - Oct 9, 2:00 -4:30pm
@ Uplands (here again)

Popard Super Conference - November 5 and 6

LST meetings - dates TBD

